

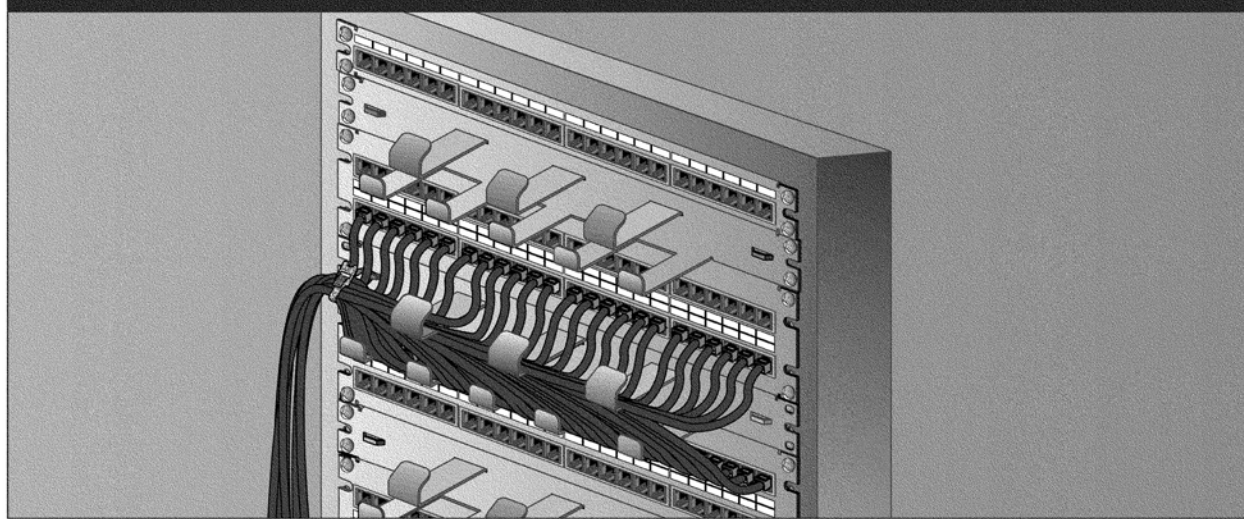
BELDEN

MDVO – Patch Panel *MDVO – Panneau de raccordement*

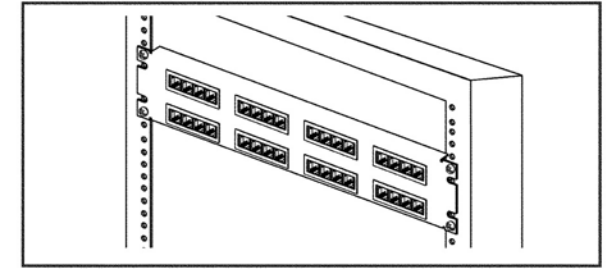
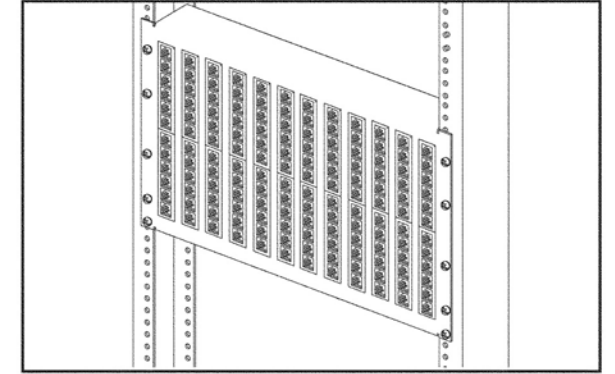
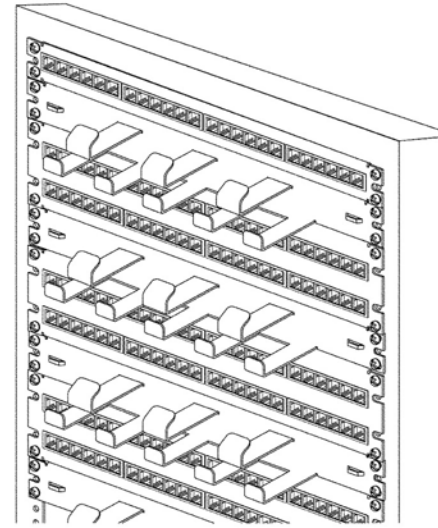
Release/Version 03.00

PX101057

NXPPM Type *Type NXPPM*



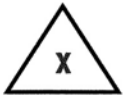
1 Installation planning. *Planification d'installation.*



Legend *Légende*



Attention
Attention



Repeat
Répéter



Step
Étape

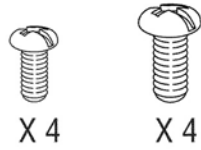


Quantity
Quantité

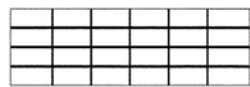
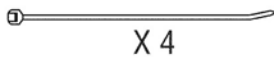


Direction of movement
Sens du mouvement

Materials *Matériel*

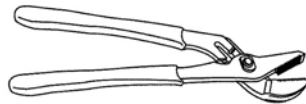


Optional *En option*

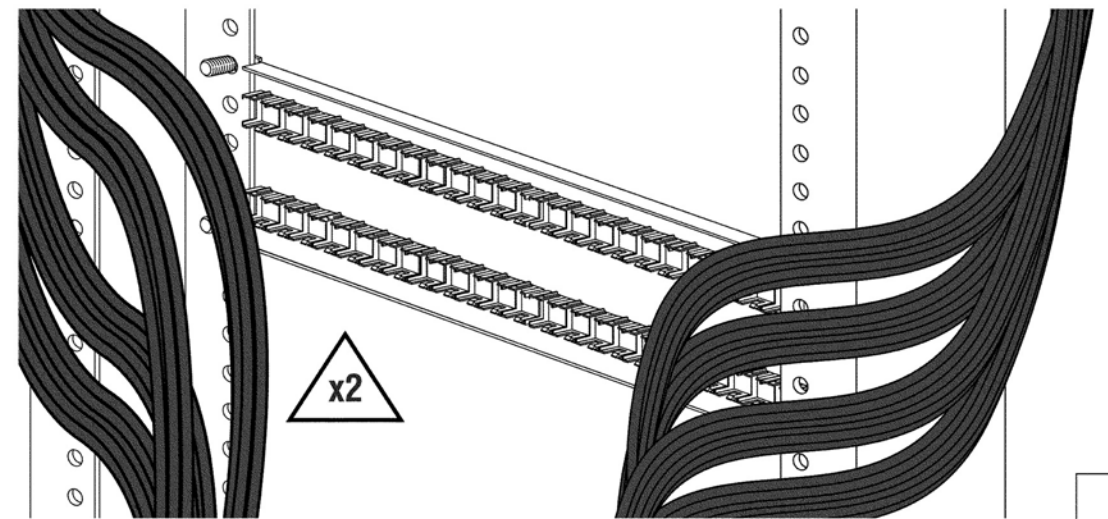


X 2

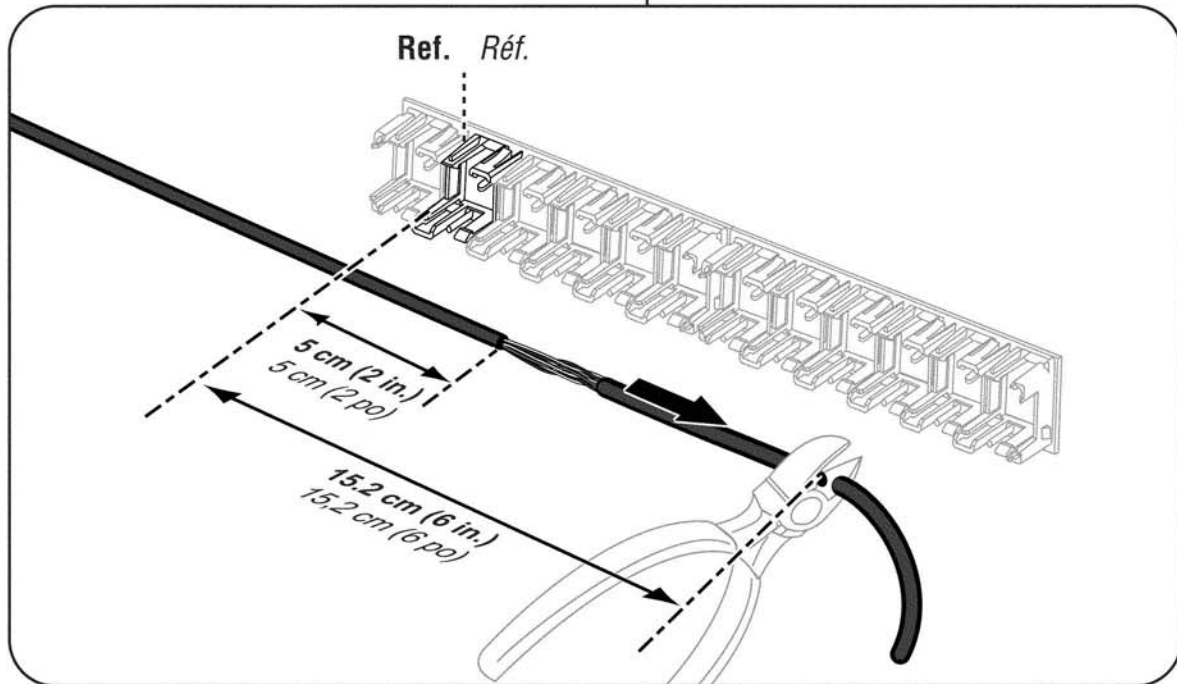
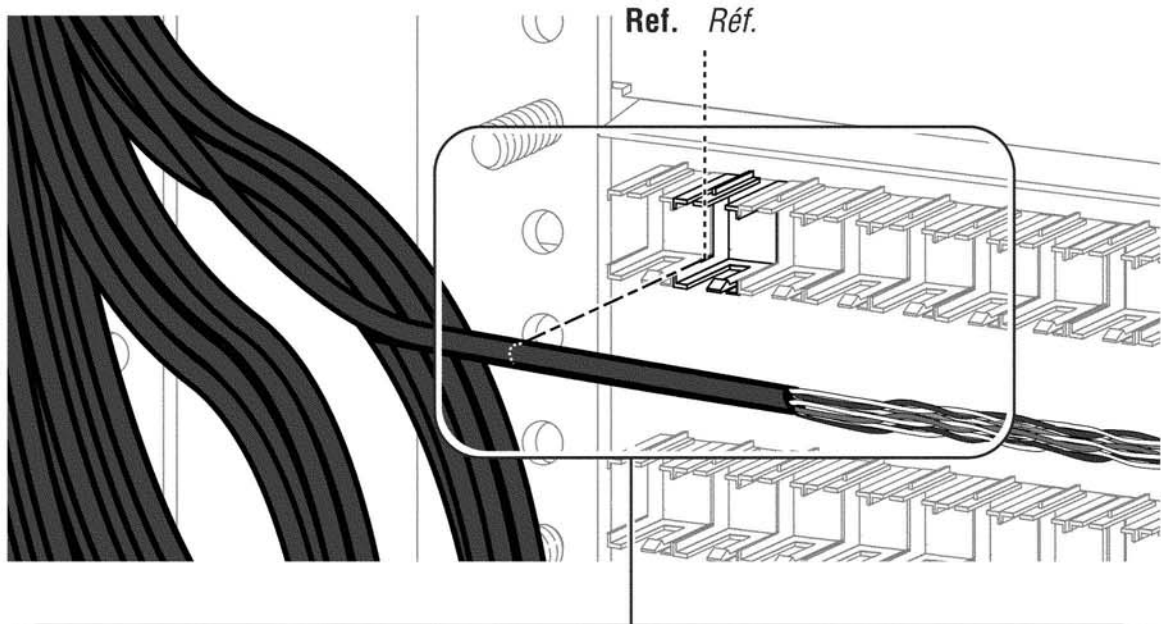
Tools *Outils*



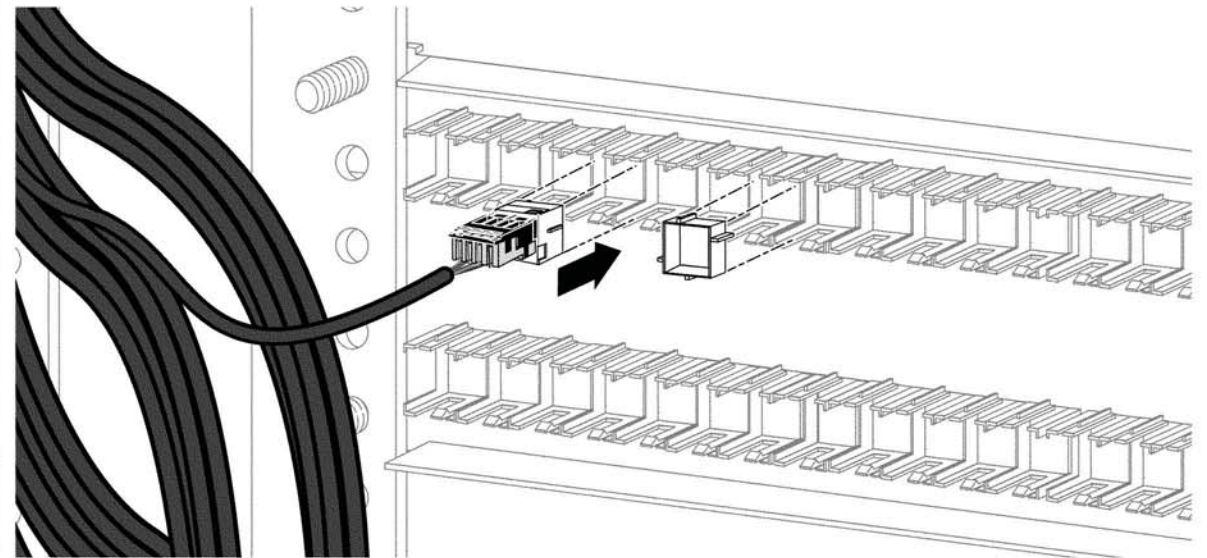
2 Prepare cable bundles (each bundle contains 6 cables). *Préparer les faisceaux de câbles (chaque faisceau contient 6 câbles).*



- 3** Measure, mark and identify the cables separately for each port, as shown.
Mesurer, marquer et identifier les câbles séparément pour chaque accès, comme le montre la figure.



4



5

- Patch cords dressing.**
Arrangement des cordons de raccordement.

